



ISESER 2019

**INTERNATIONAL SYMPOSIUM
FOR ENVIRONMENTAL
SCIENCE AND ENGINEERING
RESEARCH**

PROCEEDING BOOK

*Konya Technical University
Environmental Engineering Dept.*

25-27 May 2019, Konya, TURKEY



ISESER

**INTERNATIONAL SYMPOSIUM FOR
ENVIRONMENTAL SCIENCE AND
ENGINEERING RESEARCH
(ISESER2019)**

May 25-27, 2019

PROCEEDING BOOK

ISBN – 978-605-184-173-1

Editors:

**Şükrü Dursun, Engineering and Natural Sciences Faculty, Konya Technical University, Konya
Zeynep Cansu Ayturan, Engineering and Natural Sciences Faculty, Konya Technical University,
Konya**

Fatma Kunt, Engineering and Architecture Faculty, Necmettin Erbakan University, Konya

2019, Konya, Turkey

O 42. RELATIONSHIP BETWEEN THE GEOLOGICAL UNITS AND SOIL GROUPS: A CASE STUDY AROUND THE HATIP-KAŞINHANI (KONYA-TURKEY)

Yeşim Özen¹, Fetullah Arık¹

¹*Konya Technical University, Faculty of Engineering and Natural Science, Geological Engineering Department, 42031, Selçuklu, Konya*

E-mail: fetullah42@hotmail.com

ABSTRACT: In this study, it is investigated whether the soil classes in the region between Hatip and Kaşinhani (Konya-Turkey) are related to geological units. The Upper Triassic-Lower Cretaceous Lorasdağı formation which is composed of limestone, dolomitic limestone and dolomites and the Upper Cretaceous aged Midostepe formation consisting of clayey limestone, radiolarite, shale and marl are the basement of the area between Hatip and Kaşinhani (Konya). These units contain tectonic contact with the Upper Cretaceous Hatip Ophiolitic Melange and Çayırbağı Ophiolite. The Upper Miocene-Lower Pliocene aged Sille and Ulumuhsine formations are unconformably overlying these all units. All these units cut by Upper Miocene-Pliocene Erenlardağı volcanites. The Quaternary - Holocene young sediments consisting of alluvial fan and the terrestrial clastics cover all the units underneath.

According to the classic soil classification, zonal and azonal soils are located in the study area. These soils formed generally depending on the geological characteristics of the host rocks based on the preliminary observations. While the area where Lorasdağı limestone seen is called as "Bare Rock", the soils located on the ophiolitic rocks are generally zonal soils such as "Red Brown Soils" and "Brown Forest Soils". The soils located on the Ulumuhsine formation with clayey limestone, sandstone and marl alternation correspond to "Red Brown soils" and "Brown Soils" classes from zonal soils. The soils located on the Erenlerdağ volcanites in the southwest of the study area are classified as "Limeless Brown Forest Soils" from zonal soils. Alluvium, which is composed of current terrestrial sediments, is classified as "Alluvial Soils" from azonal soils.

Keywords: Hatip, Kaşinhani, soil, geology, soil classification

1. INTRODUCTION

The study area is in the region between Hatip and Kaşinhani to the south of Konya Province (Fig. 1). This study was conducted to determine whether there is a relationship between geological units and soil classification. The research area is in transition of Anatolides and Taurides described by Ketin (1966); According to Özgül (1976), it is in the "Bolkardağı unit" in the Taurides, According to Okay (1986), it is in the "Afyon - Bolkardağı zone". According to Özcan et al. (1988 ve 1990), the study area is located in the central part of the Kütahya - Bolkardağı Belt which forms the southern edge of the Anatolites.

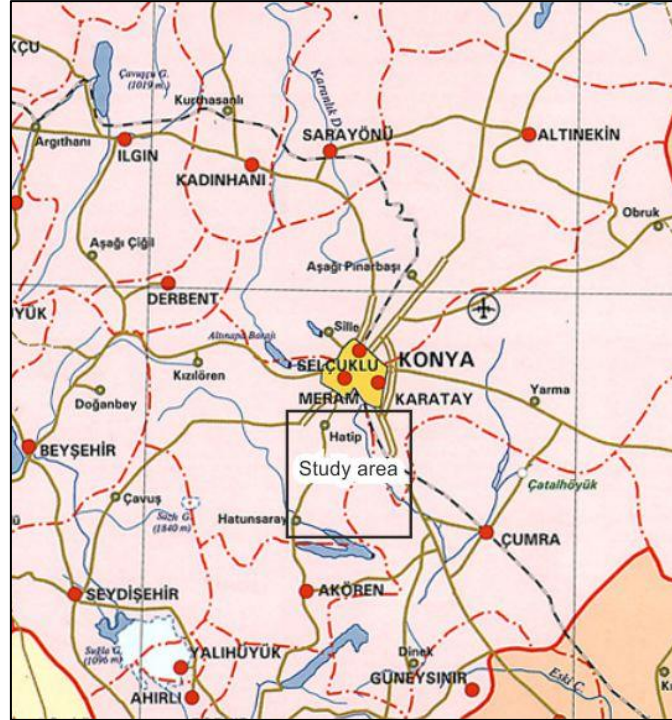


Figure 2. Location map of the study area.

2. MATERIAL AND METHOD

In order to determine whether there is a relationship between geological units and soil classification, General Directorate of Rural Services (1987) map made according to Marbut (1928) was used.

3. RESEARCH FINDINGS

The Upper Triassic-Lower Cretaceous Lorasdağı formation which is composed of limestone, dolomitic limestone and dolomites and the Upper Cretaceous aged Midostepe formation consisting of clayey limestone, radiolarite, shale and marl are the basement of the area between Hatip and Kaşınhanı (Konya). These units contain tectonic contact with the Upper Cretaceous Hatip ophiolitic melange and Çayırbağı ophiolite. The Upper Miocene-Lower Pliocene aged Silile and Ulumuhsine are unconformably overlying these units. The Erenlardağı volcanites cut all these units. The Quaternary - Holocene young sediments consisting of alluvial fan and the terrestrial clastics cover all the units underneath (Fig. 2).

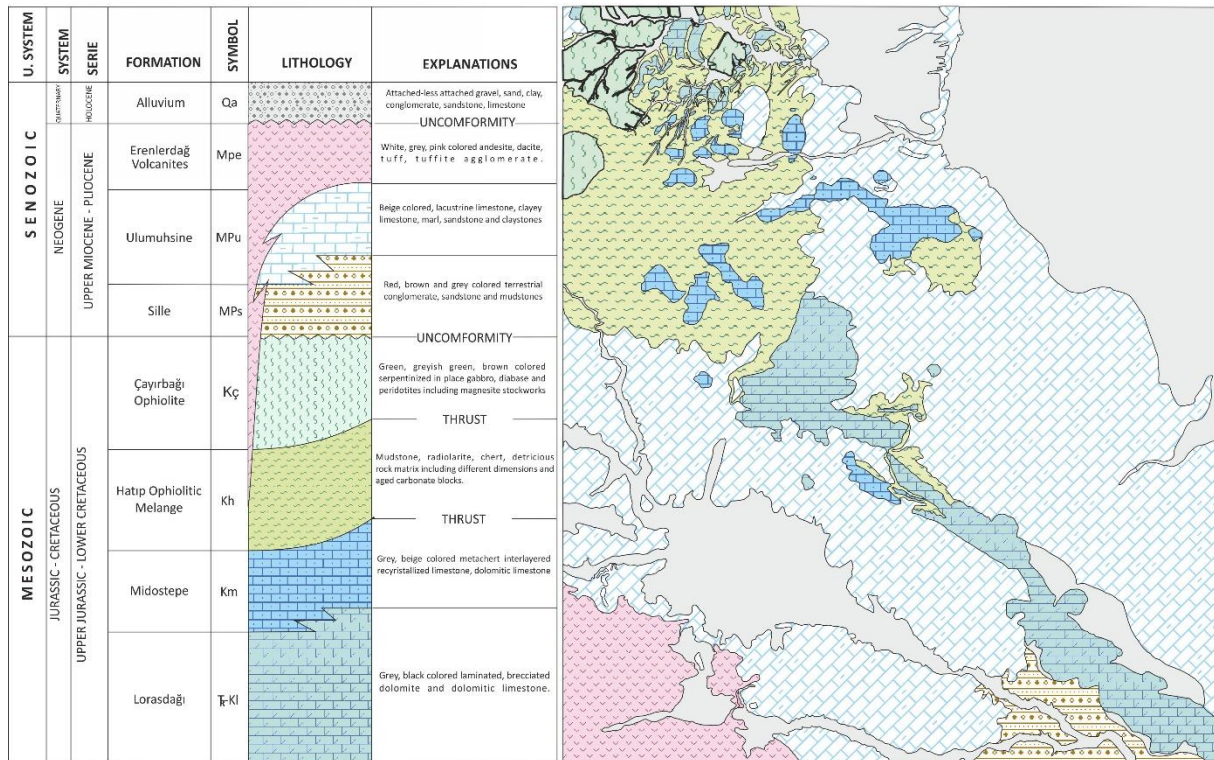


Figure 2. Simplified lithostratigraphic columnar section and geological map of the study area (modified after Yetiş, 2017; Yetiş and Arık, 2018)

As a result of the change of source material under different climates, topography and geological conditions, different soils belonging to Zonal and Azonal groups were formed. According to classical soil classification, it is seen that the soils in the study area are generally formed depending on the geological characteristics of the bedrock. “Reddish Brown Soils” are usually developed on carbonated rocks of Lorasdağı, Midostepe and Ulumuhsine formation. The soils on the ophiolitic rocks are “Reddish Brown Soils” and “Brown Forest Soils”, which are formed on the main material with high lime content. The soils on the Ulumuhsine formation consisting of limestone, clayey limestone, sandstone and marl correspond to the “Reddish Brown Soil” and “Brown Soil” classes with high lime content (Ca rich). The soils on the Erenlerdağ volcanites, which contain andesite, dacite, tuff, agglomerate, are classified as “Limeless Brown Forest Soils” consisting of lime-free soils where natural vegetation is bushes and grasses, and “Colluvial Soils” containing low-soil rough stones and debris. The soils on the alluvial deposits in the region are classified as “Alluvial Soils”, which are young soils formed on young unfixed or less attached units, and “Regosols”, which are over sandy, low water retention capacity and high permeable shallow soils formed on loose and unconnected units. The areas where the limestones of the Lorasdağı and Midostepe formations are defined as “Bare Rocks” (Fig. 3).

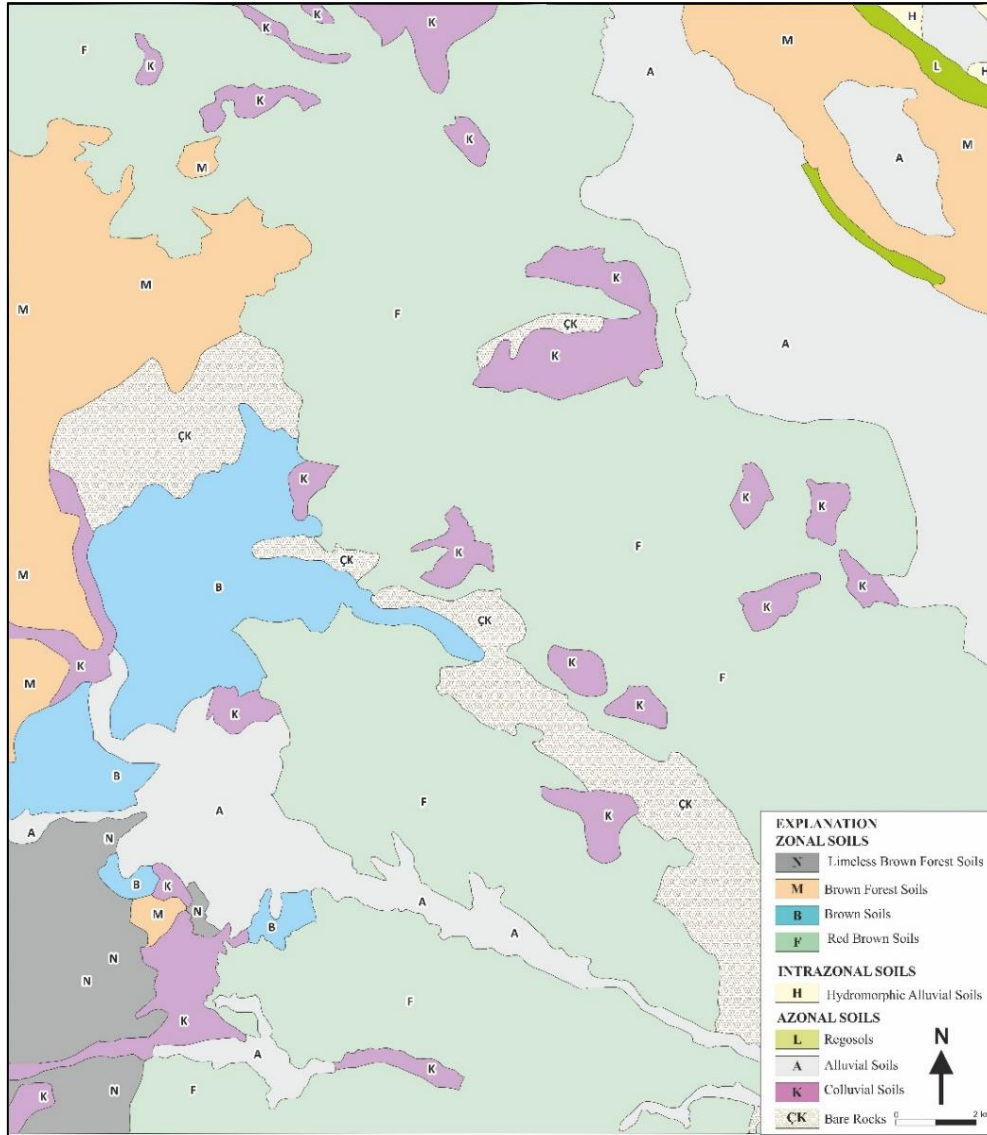


Figure 3. Soil classification map of the study area (modified from General Directorate of Rural Services, 1987).

4. CONCLUSION

In this study conducted to determine whether there is a relationship between geological units and soil classification, it is observed that “Brown, Reddish Brown and Brown Forest Soils”, which have high lime content, are generally developed on carbonated rocks of Ulumuhsine, Sille, Lorasdağı and Midostepe formations. Non-soil areas containing dense rocky limestones belonging to Lorasdağı and Midostepe formations are defined as “Bare Rocks”. Soils on the ophiolitic rocks are classified as “Reddish Brown Soils” and “Brown Forest Soils” due to the Ca content in the ophiolitic rocks, which also contain dense limestone blocks. The soils located on Erenlerdağ volcanites containing andesite, dacite, tuff, agglomerate were defined as "Limeless Brown Forest Soils" located away from the carbonate rocks and "Colluvial Soils" containing coarse stones and rubble. The soils on the alluviums are classified as “Alluvial Soils” and “Regosols”, which are the soils formed on loose units. As a result, the lithological properties of geological units are effective in soil formation, and the relationship between soil classification and geological units is clearly seen.

REFERENCES

- General Directorate of Rural Services (abolished), 1987, “Soil classification map series of Turkey”.
Ketin, G., 1966, Tectonic units of Anatolia: *M.T.A. Institute Journal*, 66, 20-34.

Proceeding Book of ISESER 2019

- Marbut, C.F. 1928, A scheme of soil classification. *Proceedings First International Congress of Soil Science*, Washington, DC, 4, 1-31.
- Okay, A. İ., 1986, High - pressure / low temperature metamorphic rocks of Turkey, in blueschists and eclogites; *The Geol Soc. Amer.*, Mem, 164, 338-348.
- Özcan, A., Göncüoğlu, M.C., Turan, N., Uysal, Ş., Şentürk, K., ve Işık, A., 1988, Late Paleozoic evolution of the Kütahya-Bolkardağ Belt, *METU Journal of Pure and Applied Sciences*, 21, 1/3, 211-220.
- Özcan, A., Göncüoğlu, M.C., Turan, N., Uysal, Ş., Şentürk, K. and Işık, A., 1990, Basic Geology of Konya-Kadınhanı-Ilgın District, M.T.A. Compilation Report no: 8974, Konya.
- Özgül N., 1976, "Some Basic Geological Characteristics of Taurus Mountains", *Geological Bulletin of Turkey*, 19-1, 65-78.
- Yetiş, E., 2017, Evaluation of geochemical properties of rocks and soils between Karadiğın, Hatunsaray and Kaşınhanı neighborhoods (Meram-Konya) in terms of environment and public health, Selçuk University, Graduate School of Natural and Applied Sciences, Master Thesis, 164 pp.
- Yetiş, E., Arık, F., 2018, Factors controlling heavy element distribution in soils between Karadiğın, Hatunsaray and Kaşınhanı (Meram-Konya), *71. Geological Congress of Turkey*, 871-872.